

MSEL/SE/2025-26/07

May 13, 2025

The Manager  
Listing Department  
National Stock Exchange of India Limited  
'Exchange Plaza', C - 1, Block G,  
Bandra-Kurla Complex,  
Bandra (E),  
Mumbai 400051

The Manager  
Listing Department  
BSE Ltd.  
1st Floor, New Trading Ring,  
Rotunda Building  
P.J. Towers, Dalal Street, Fort  
Mumbai-400 001

**SYMBOL – MAGADSUGAR**

**STOCK CODE – 540650**

Dear Sirs/Madam,

**Subject: Disclosure of information pursuant to Regulation 30 read with Part A of Schedule III of the SEBI (Listing Obligations and Disclosure Requirements) Regulations, 2015.**

In compliance with Regulation 30 read with Part A of Schedule III of the SEBI (Listing Obligations and Disclosure Requirements) Regulations, 2015 and the Company's Code of Practices and Procedure for Fair Disclosure of Unpublished Price Sensitive Information, kindly find enclosed herewith a copy of the Investor Presentation with respect to the Financial Highlights of the quarter and year ended 31<sup>st</sup> March, 2025 of the Company.

Please take the same on record.

Thanking you,

Yours faithfully,

**For Magadh Sugar & Energy Limited**

S Subramanian  
**Company Secretary**  
FCS - 4974



**K. K. BIRLA GROUP OF SUGAR COMPANIES**

Corporate Office: 5<sup>th</sup> Floor, Birla Building, 9/1 R. N. Mukherjee Road, Kolkata 700 001 . Email: [birlasugar@birla-sugar.com](mailto:birlasugar@birla-sugar.com)  
Phone: + 91 33 2243 0497 / 8, 2248 7068, 3057 3000, 3041 0900 . Fax: + 91 33 2248 6369  
Regd. Office: P.O. Hargaon, Dist. Sitapur, U.P., PIN 261 121 . Website: [www.birla-sugar.com](http://www.birla-sugar.com) . CIN: L15122UP2015PLC069632





***Building Stability | Delivering Value***

*Investor Presentation Q4 & FY25*



*This presentation and the accompanying slides (the “Presentation”), which have been prepared by **Magadh Sugar & Energy Limited** (the “Company”), have been prepared solely for information purposes and do not constitute any offer, recommendation or invitation to purchase or subscribe for any securities, and shall not form the basis or be relied on in connection with any contract or binding commitment whatsoever. No offering of securities of the Company will be made except by means of a statutory offering document containing detailed information about the Company.*

*This Presentation has been prepared by the Company based on information and data which the Company considers reliable, but the Company makes no representation or warranty, express or implied, whatsoever, and no reliance shall be placed on, the truth, accuracy, completeness, fairness and reasonableness of the contents of this Presentation. This Presentation may not be all inclusive and may not contain all of the information that you may consider material. Any liability in respect of the contents of, or any omission from, this Presentation is expressly excluded.*

*Certain matters discussed in this Presentation may contain statements regarding the Company’s market opportunity and business prospects that are individually and collectively forward-looking statements. Such forward-looking statements are not guarantees of future performance and are subject to known and unknown risks, uncertainties and assumptions that are difficult to predict. These risks and uncertainties include, but are not limited to, the performance of the Indian economy and of the economies of various international markets, the performance of the industry in India and world-wide, competition, the company’s ability to successfully implement its strategy, the Company’s future levels of growth and expansion, technological implementation, changes and advancements, changes in revenue, income or cash flows, the Company’s market preferences and its exposure to market risks, as well as other risks. The Company’s actual results, levels of activity, performance or achievements could differ materially and adversely from results expressed in or implied by this Presentation. The Company assumes no obligation to update any forward-looking information contained in this Presentation. Any forward-looking statements and projections made by third parties included in this Presentation are not adopted by the Company and the Company is not responsible for such third-party statements and projections.*



**Business  
Updates**



**Annual  
Financials**



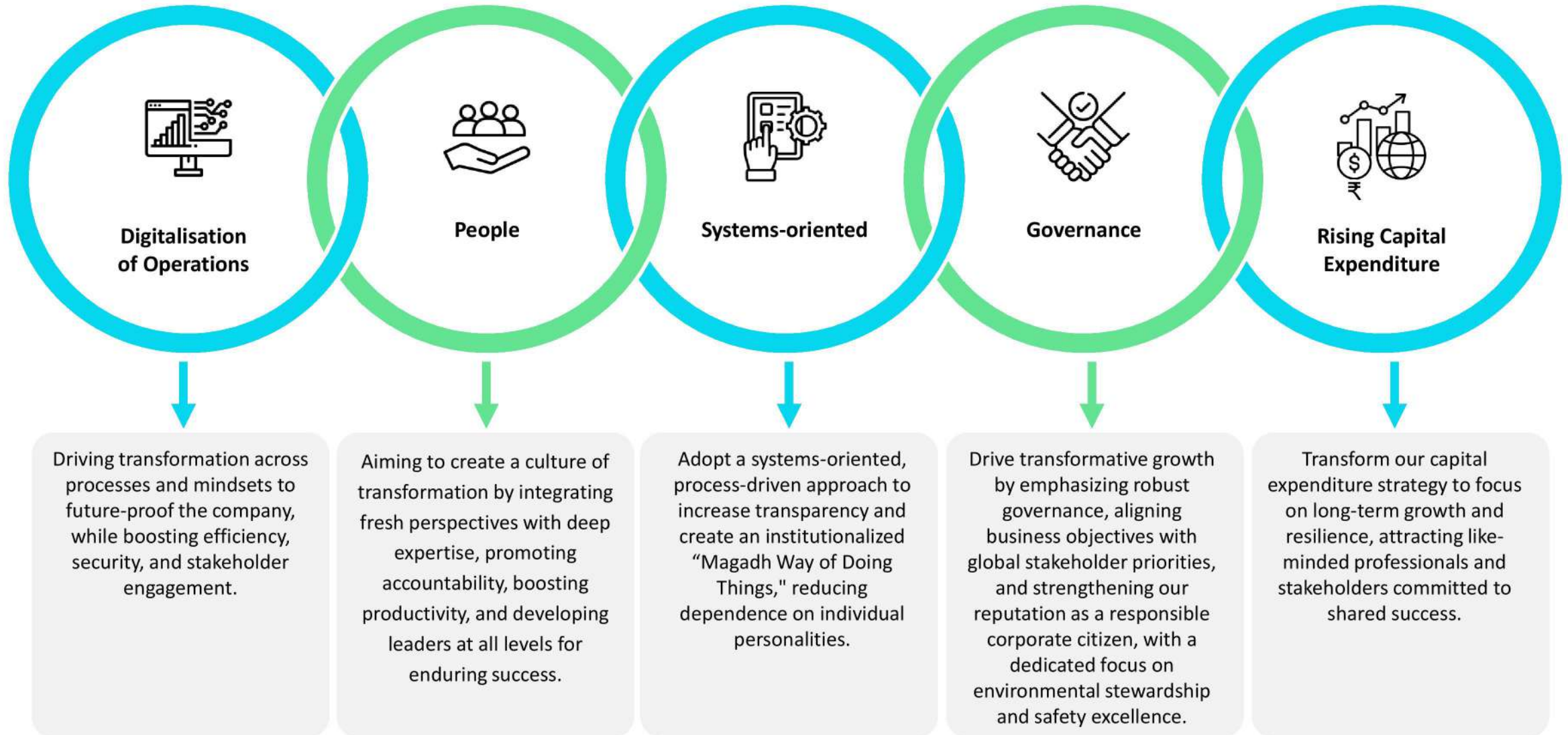
**Company  
Overview**



# Business Updates



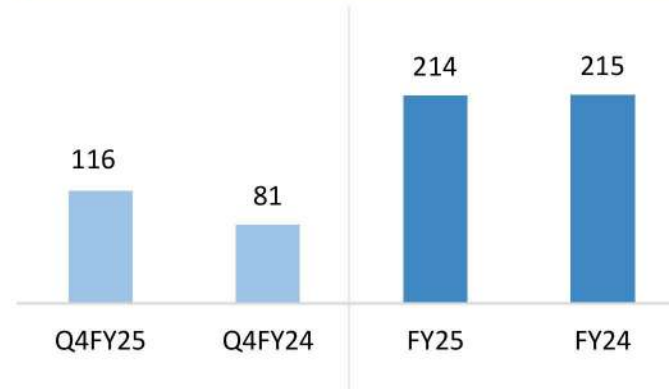




## Total Income (Rs Cr)



## EBITDA (Rs Cr)



## PAT (Rs Cr)



## Revenue Breakup (Rs Cr)

Sugar	<b>Rs 365 Cr</b> Q4FY25	<b>Rs 1191 Cr</b> FY25
Distillery	<b>Rs 64 Cr</b> Q4FY25	<b>Rs 296 Cr</b> FY25
Power	<b>Rs 45 Cr</b> Q4FY25	<b>Rs 84 Cr</b> FY25

## Commentary

- Profitability in Q4FY25 and FY25 rose by 212% and 45%, respectively, driven by improved sales margins and higher sugar sales, despite lower crushing volumes and reduced recovery and the remission of cane commission for earlier years.
- Sugar sales value increased by 28% in Q4FY25 and 26% in FY25, supported by higher market prices and volume growth of 27% and 21%, respectively.

- Ethanol sales volumes declined by 23% in Q4FY25 due to lower production in ESY 2023–24, stemming from a molasses shortage. This shortfall was driven by the government's policy decision to restrict the diversion of sugar towards sugarcane juice and B-heavy molasses during ESY 2023-24.
- Profitability declined by 51% in Q4FY25 and 18% in FY25, primarily due to margin compression resulting from higher transfer prices of raw materials.

- Profitability in Q4FY25 and FY25 declined by 47% and 36%, respectively, driven by reduced power exports to the grid due to lower operational activity stemming from reduced crushing.

# Sugar Segment – Q4 & FY25 Performance

Particulars	Unit	Q4FY25	Q4FY24	YoY (%)	FY25	FY24	YoY (%)
Revenue	Rs Cr	364.61	252.30	44.51%	1191.20	945.88	25.94%
PBIT	Rs Cr	88.05	28.19	212.34%	114.19	89.00	28.30%

Sugarcane Crushing	Lac Qtls	129.53	148.95	-13.04%	221.92	239.98	-7.53%
Sugar Production	Lac Qtls	13.71	16.39	-16.35%	21.71	25.09	-13.47%
Sugar Sales	Lac Qtls	5.89*	4.65	26.67%	24.38*	20.12	21.17%
Sugar Realisation	Rs / Qtls	4029	3834	5.09%	3906	3796	2.90%
Sugar Recovery (Average) – (C)	(%)	10.36%	11.44%	-9.44%	9.74%	10.48%	-7.06%
Sugar Inventory	Lac Qtls	15.66**	18.33	-14.57%	15.66**	18.33	-14.57%

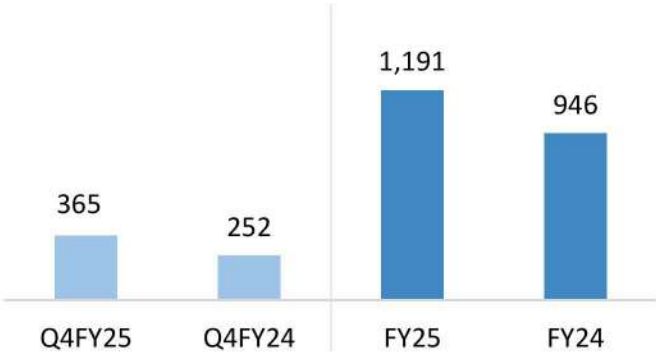
\* Includes export of 0.43 lac qtls.

\*\* Sugar stock valued at Rs. 3605/- per quintal.





Revenue (Rs Cr)



PBIT (Rs Cr)



Sugar Sales (Lac Qtls)



Sugar Realisation Domestic (Rs / Qtls)



Sugar Inventory (Lac Qtls)



Average Monthly Sugar Realisation (Rs/Qtls)



Monthly Sugar Inventory (Lac Qtls)





## **Government Recent announcement:**

- On 20 January 2025, the Government of India announced export quota of One Million ton of Sugar for Sugar Season 2024-25. The Company has received allocation of 17,377 ton as its export quota.
- Fair and Remunerative Price (FRP) of sugarcane for sugar season 2025-26 fixed at Rs.355 per quintal linked to the base recovery rate of 10.25%

## **Key highlights of the Sugar (Control) order 2025**

- Raw sugar and Khandsari sugar are now included in the total sugar stock
- Khandsari units with a crushing capacity of more than 500 TCD are now required to pay the Fair and Remunerative Price (FRP) to farmers and will be brought under regulatory oversight.
- By-products will also be regulated to ensure adequate availability of sugar for domestic consumption.

## **Government Decision Awaited:**

- The government is yet to take a decision on the implementation of an integrated pricing framework aimed at linking the Fair and Remunerative Price (FRP) of sugarcane with the Minimum Selling Price (MSP) of sugar and the pricing of ethanol.

# Distillery Segment – Q4 & FY25 Performance

Particulars	Unit	Q4FY25	Q4FY24	YoY (%)	FY25	FY24	YoY (%)
Revenue	Rs Cr	64.05	83.64	-23.42%	295.82	295.83	-
PBIT	Rs Cr	10.58	21.57	-50.95%	60.04	73.18	17.96%

Production	Lac Litres	154.21	132.27	16.59%	468.14	498.68	-6.12%
Sales	Lac Litres	102.13	124.30	-17.84%	463.56	466.85	-0.70%
Average Realisation (B)	Rs / Litres	60.73	60.73	-	60.73	60.73	-
Closing Stock	Lac Litres	73.31	69.26	5.85%	73.31	69.26	5.85%





- As on 31 March 2025 OMC have secured around 369.54 Cr. Ltr. of Ethanol, Sugar Sector contributed around 49% and balance 51% by Grain Sectors.
- The price of C-heavy derived ethanol has been increased by Rs. 1.69/ltr, from Rs. 56.28/ltr to Rs. 57.97/ltr.
- Bending percentage as of 31 March 2025 is 18.36%
- Monthly average ethanol blending of 19.78% achieved for the month of March 2025

## Ethanol Supply Situation as of 31 March, 2025 for ESY 2024-25

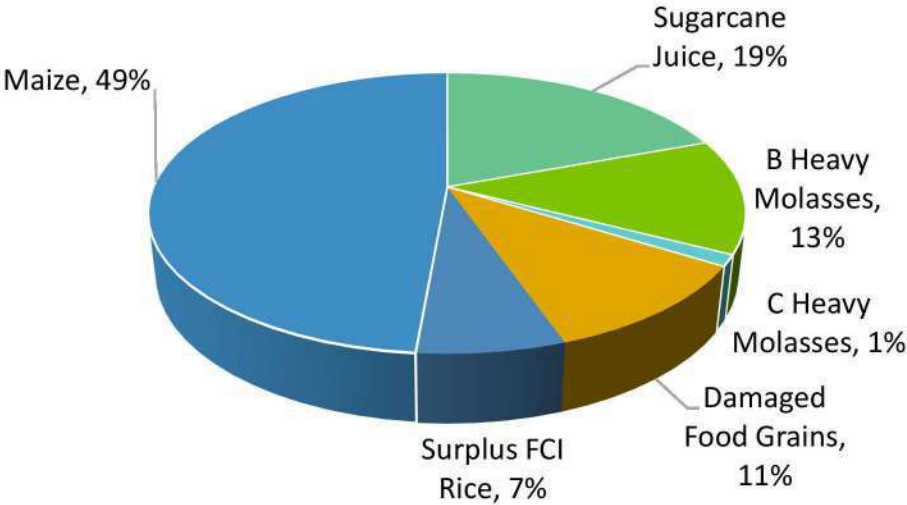
Feed stock	Total Qty. Available (2024-25 ESY)	Supplied Qty.	Supplied %
Sugarcane Juice	192.94	139.15	72.12%
B Heavy Molasses	131.77	37.42	28.40%
C Heavy Molasses	12.78	4.46	34.90%
<b>Sugar Based Feedstock</b>	<b>337.49</b>	<b>181.03</b>	<b>53.64%</b>
Damaged Food Grains	107.46	27.32	25.42
Surplus FCI Rice	67.39	5.03	7.46%
Maize	484.35	156.16	32.24%
<b>Grain Based Feedstock</b>	<b>659.20</b>	<b>188.51</b>	<b>28.60%</b>
<b>Grand Total</b>	<b>999.69</b>	<b>369.54</b>	<b>37.08%</b>

(Values in Rs Cr) ; Source - ISMA

### Government Recent Announcement:

In ESY 2024-25, Prices of C based ethanol has been revised to Rs. 57.97 per litre from Rs. 56.28 per litre but no revision in price of B based and Cane Juice based ethanol.

## Total Quantity Available



Particulars	Unit	Q4FY25	Q4FY24	YoY (%)	FY25	FY24	YoY (%)
Revenue	Rs Cr	45.42	55.02	17.45%	83.80	85.44	-1.92%
PBIT	Rs Cr	14.66	27.40	-46.50%	21.78	33.96	-35.87%

Generation	Lac Units	459	617	-25.61%	771	920	-16.20%
Sales	Lac Units	246	333	-26.13%	368	493	-25.35%
Average Realisation	Rs / Unit	5.46	5.31	-2.82%	5.55	5.27	-5.31%





# Annual Financials



# Profit & Loss Highlights

Particulars (Rs Cr)	Q4FY25	Q4FY24	YoY (%)	FY25	FY24	YoY (%)
<b>Total Income</b>	<b>356</b>	288	23.61%	<b>1325</b>	1098	20.67%
Raw Material Cost	<b>181</b>	143	26.57%	<b>904</b>	702	28.77%
Employee Cost	<b>20</b>	19	5.26%	<b>67</b>	62	8.06%
Other Expenditure	<b>39</b>	45	-13.33%	<b>140</b>	119	17.65%
<b>EBIDTA</b>	<b>116</b>	81	43.21%	<b>214</b>	215	-0.47%
Depreciation	<b>7</b>	6	16.67%	<b>28</b>	26	7.69%
<b>PBIT</b>	<b>109</b>	75	45.33%	<b>186</b>	189	-1.59%
Interest	<b>13</b>	11	18.18%	<b>38</b>	33	15.15%
<b>Profit Before Tax</b>	<b>96</b>	64	50.00%	<b>148</b>	156	-5.13%
Tax	<b>24</b>	17	41.18%	<b>39</b>	40	-2.50%
<b>Profit After Tax</b>	<b>72</b>	47	53.19%	<b>109</b>	116	-6.03%
<b>EPS (Rs)</b>	<b>50.75*</b>	33.27*		<b>77.67</b>	82.61	

\* Not annualised

**The Board has recommended a Dividend of 125% of the Face Value, that is, Rs 12.50 per Equity Share for FY25.**



## 1. Details of Outstanding position :-

Particulars (Rs Cr)	31-03-2025	31-03-2024
Term Loan	229	123
Cash Credit / Short Term Loan	478	514
<b>Total Debt</b>	<b>707</b>	<b>637</b>
Trade Payable	63	151
<b>Total Outside Liability</b>	<b>770</b>	<b>788</b>

- Long Term Credit Rating **"A/Stable"** and Short-Term rating reaffirmed at **A1 by India ratings and Research in February 2025.**

## 2. Growth drivers with on going Capex :

Expansion of Sugar plant of Narkatiagunj unit by increasing Crushing capacity from 7500 TCD to 10000 TCD and steam saving measures resulting into Bagasse Saving has been completed.

Conversion of Sidhwalia Distillery (Sugar cane basis) to multifeed distillery, commissioning is going on and expected to be completed by end of May 2025.

## 3. New Initiative :

A New Multi-feed Distillery of 100 KLPD along with steam saving Measure at Hasanpur unit has been envisaged, with a capital cost of Rs. 210 Crores.



Particulars (Rs Cr)	FY25	FY24
Cash Generated From Operating Activities	139.32	31.07
Cash Used In Investing Activities	(149.78)	(42.99)
Cash Generated From Financing Activities	10.41	11.95
<b>Net Decrease In Cash And Cash Equivalents</b>	<b>(0.05)</b>	<b>0.03</b>
Cash and Cash Equivalents at the beginning of the Year	0.16	0.13
<b>Cash and Cash Equivalents at the end of the Year</b>	<b>0.11</b>	<b>0.16</b>

# Company Overview



Magadh Sugar & Energy Limited incorporated in 1932 (Group in Sugar Business over 9 decades), pursuant to the scheme of merger and demerger this company formed in 2015, **Manufacturing Sugar, Ethanol and Power.**



### Capacity

**21,500**

Crushing Capacity

**155**

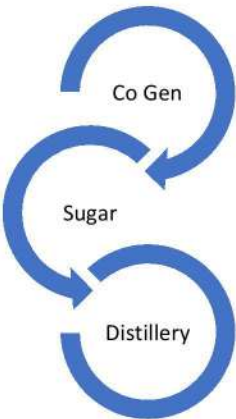
Distillery Capacity

**38**

Co Gen Capacity



### Integrated Operations



### Patronage of K.K. Birla Group

- Established in 1932 by Late Dr. Krishna Kumar Birla.
- Excellent Corporate Governance
- Highly Experienced Management



### Healthy Financials

**Sustainable  
EBITD**

**Credit Rating:  
A**



Incorporated in 1932 (Group in Sugar Business over 9 decades), pursuant to the scheme of merger and demerger this company formed in 2015

Located in Bihar, the company’s core business includes **Sugar, Ethanol and Co-Generation** .

**3 sugar mills** with a combined crushing capacity of **21,500 TCD**

**2 distillers** with a total capacity of **155 KLPD**




Cogeneration facility generate **38 MW power**

**Change in Operational Capacity –**

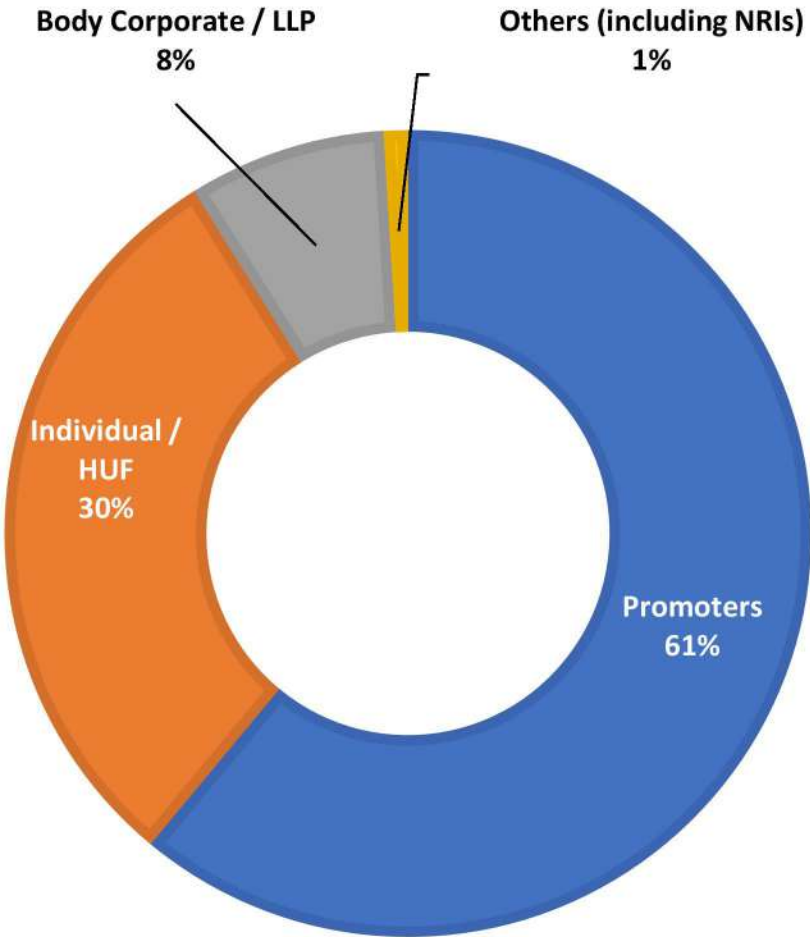
- Expansion of Sugar plant of Narkatiagunj unit by increasing Crushing capacity from 7500 TCD to 10000 TCD and steam saving measures resulting into Bagasse Saving has been completed.
- Conversion of Sidhwalia Distillery (Sugar cane basis) to multifeed distillery, commissioning is going on and expected to be completed by end of May 2025.

**New Initiative:**

- A New Multi-feed Distillery of 100 KLPD along with steam saving Measure at Hasanpur unit has been envisaged, with a capital cost of Rs. 210 Crores.

Region	Plant (Bihar)	Capacity
 Paschim Champaran	New Swadeshi Sugar Mills	10,000 TCD
	New Swadeshi Distillery	80 KLPD
	New Swadeshi Co-generation	10 MW
 Gopalganj	Bharat Sugar Mills	5,000 TCD
	Sidhwalia Multi Feed Distillery	75 KLPD
	Bharat Co-generation	18 MW
 Samastipur	Hasanpur Sugar Mills	6,500 TCD
	Hasanpur Co-generation	10 MW

Shareholder Information	
BSE Ticker	540650
NSE Symbol	MAGADHSUGAR
Market Cap (Rs. Cr.)	837.75
Free-float (%)	38.98%
Free Float Market Cap (Rs. Cr.)	326.57
Shares Outstanding (Cr.)	1.41
Industry	Sugar



# Contact Us



Mr. Dilip Patodia  
[dilip.patodia@birla-sugar.com](mailto:dilip.patodia@birla-sugar.com)

9/1,R.N. Mukherjee Road, Kolkata



Ms. Pooja Sharma / Ms. Amritha Poojari  
[pooja.sharma@stellar-ir.com](mailto:pooja.sharma@stellar-ir.com) / [amritha@stellar-ir.com](mailto:amritha@stellar-ir.com)

A-405, Kanakia Wallstreet, Andheri (East), Mumbai

